

# Nature+Scape!

自然+景观

Beach & Waterfront  
Commercial & Mixed-use  
Cultural Zone  
Exhibition & Festival  
Hospitality  
Office Zone  
Park  
Residential Zone  
Scenic Zone  
Square

凤凰出版传媒集团 | 凤凰空间  
江苏人民出版社 | IFENGSPACE

度本图书 Dopress Books 编著



**Chris Razzell**

AILA – ASPECT Studios Pty Ltd, Director  
澳大利亚景观设计师协会获奖成员  
澳大利亚景观设计师协会总编

"*+Scape!* provides a platform for landscape architects to publish leading contemporary design works that address the needs of tomorrow's community, whilst also taking up the challenges of sustainability, and, integrating art and landscape in a creative manner. This publication's editing and attention to content delivery ensures readers gain relevant project information and more importantly, an insight into the designers ideas and aspirations. ASPECT Studios is delighted to be a part of this publication."

"《+Scape!》丛书是景观设计师联合展示最杰出作品的最佳平台。这些设计不仅关注未来社会环境的需求，强调可持续发展，更创造性地将艺术理念与景观设计融合在一起。这套书在编写内容上的重点不仅确保读者可以获得相关作品的详细信息，更重要的是，还能引导他们洞察设计师的深刻思想和设计诉求。澳洲景观设计师协会很荣幸能够参与其中。"

—— Chris Razzell



**Cesar Azcárate**

PhD Architecture – ACXT Architects, Project Manager  
西班牙资深建筑师，建筑学博士  
西班牙ACXT建筑师事务所项目经理

"There are so many publications about architecture, art and landscape, however, it is not really easy to find the interest that *+Scape* generates for us. Both its design and its contents, are a great help for us to understand what is happening in the world, through well edited and fantastic articles. We in ACXT are delighted to have been chosen by this prestigious publication in order to share our latest ideas, and to be able to enjoy reading about great projects. These are, without doubts, sources of inspiration for everybody interested in the world of landscape, architecture and urbanism."

"市面上关于建筑、艺术以及景观设计的出版物不计其数，然而却很难找到一本可以像《+Scape!》一样令人爱不释手。这套书无论在设计还是内容方面，连同严谨的编译和生动的文字介绍，都非常有助于我们了解世界各地的景观设计正在发生什么样的变化。我们ACXT成员很高兴作品被最终选中，有机会与大家分享我们最新的设计理念，欣赏更多伟大的景观设计作品。毫无疑问，每个对景观、建筑和城市规划设计感兴趣的人都能从中找到灵感。"

—— Cesar Azcárate



**Todd Pilgreen**

AIA – Jerde Partners, China Director  
美国建筑协会获奖成员  
美国捷得国际建筑师事务所中国区总裁

"The *+Scape!* publication offers a highly creative and exceptional quality of media to showcase important designs and works from around the globe. The carefully selected works contains detailed information and materials that both educate and inspire. The Jerde Partnership is thrilled to be a part of their collection and have the opportunity to showcase some of our landmark projects."

"《+Scape!》丛书为读者展示了一系列来自世界各地的极富创造力的高品质景观设计作品。这些精选案例包含详尽的材料信息，既对实际的操作具有指导意义，又能给读者带来无限的创作灵感。我们（捷得国际建筑师事务所）很荣幸能够参与其中，并借此机会展示一些我们的代表性作品。"

—— Todd Pilgreen

澳大利亚、西班牙、美国景观设计名师联袂推荐

Beach & Waterfront Commercial & Mixed-use Cultural Zone Exhibition & Festival Hospitality Office Zone Park Residential Zone Scenic Zone Square

# Nature+Scape!

Inspiring Water & Plants Features in Landscape

Landscape design plays a unique and important role in environmental planning and public visual interaction. It can build a distinguishable image or local characteristics as the landmark for a certain place, promote the value of commercial development projects, combine human being and the environment together, as well as arousing people's mutual feeling for art and nature. However, many landscape designers are facing a rough challenge: many aspects of landscape design including materials, techniques, artistic expression, professional knowledge and skills are gradually getting similar.

Fresh ideas will always be highly adored! This set of books which is full of creativity and inspiration is divided into two volumes: Art+Scape! emphasizes art installation, sculpture and artistic landscape architecture as well as the designs with creative ideas built in the nature and renovated environment; on the other hand, Nature+Scape! tends to stress on natural waterscape, vertical planting and the layout of vegetation as well as designs with natural concepts. All these highly innovative and professional projects featured in the set of books come from notable contemporary landscape designers and artists worldwide. These talented designers along with their acclaiming works make this book a practical and priceless reference for landscape designers and project developers. Furthermore, this set of books also obtains a joint recommendation from a group of world-renowned senior landscape designers and in which they have shared their newly outstanding works.

景观设计在环境规划和确立公共视觉交流方面有着独特而重要的作用。它可以树立某一区域地标式的识别形象或本地化特色，提升商业开发项目的价值，也可以将人与环境联系起来，并引起人们对艺术和自然环境的共鸣。然而，众多景观设计师正面临材料、技术、艺术表现、知识与技能等诸多方面日趋同化的挑战。

新鲜的创意将永远受到追捧！富含设计灵感的该套丛书分为两册，其中：《艺术+景观》着重介绍了自然或再建环境中的艺术装置、雕塑与艺术景观建筑；《自然+景观》则着重介绍了更倾向于生态自然的水景、立体绿化、植被花卉布局等创意设计。选自全球范围内的各种高度创新和专业化的项目案例均出自当代著名景观设计师和艺术家之手，颇具才华的设计师及其令人叹为观止的作品使本书成为景观设计师、项目开发者和景观爱好者实用而无价的资源参考书。更有享誉全球的资深景观设计师联袂推荐该丛书，并与读者分享了他们近期最为举世瞩目的作品。

Bondi to Bronte	008	Beach & Waterfront
Sugar Beach	016	
Detroit Riverfront	024	
Indianapolis Riverfront	028	
Melaan Mechelen	032	
Project in Ribera of the River Ebro U12	036	
Rotterdam Center	040	
Chavasse Park	046	Commercial & Mixed-use
Mitsui Outlet Park Iruma	052	
Namba Parks	058	
Waterway Square	064	
BGU University Entrance Square	072	Cultural Zone
Brochstein Pavilion at Rice University	076	
Courtyard and Outdoor Classroom	080	
The Anchorage Museum Common	084	
Dark Rift	092	Exhibition & Festival
Evolver	096	
Reflective Natural	100	
River Aquarium	104	
Amanali	114	Hospitality
Verdura Golf and Spa Resort	122	
Yas Links	130	
The Annenberg Retreat at Sunnylands	136	
John E. Jaqua Academic Center	144	Office Zone
The New York Times Building Lobby Garden	150	
Berestein Cemetery	158	Park
Boekenbergpark	162	
Town Hall Park	166	
Curtis Hixon Waterfront Park	172	
De Nieuwe Ooster	180	

# Nature+Scape!

Inspiring Water & Plants Features in Landscape

	Sportpark Middenmeer Voorland	186
	Nansen Park	192
	Northala Fields	198
	Quirijn Park	202
	The Park at Lakeshore East	208
Residential Zone	Baan Sansuk by Sansiri	216
	Ng Residence	226
	Garden 18	230
	Noble Remix	234
	Parkview Eclat	238
	Rolfsbukta Residential Area	248
Scenic Zone	Aurland Lookout	254
	The Vall d'en Joan landfill Site	258
	Mountain Peak Platform Top of Tyrol	262
	National Touristroute Trollstigen	266
	Parterre Bohinj	272
Square	Bordeaux Miroir D'eau	278
	Erie Street Plaza	282
	Geneva Place des Nations	288
	Stora Stream Holstebro	292
	Mathilde Square	298
	Railway Cover Theresienhöhe Munich	302
	St Andrew Square	308



NATURE+SCAPE! • Office Zone

# The New York Times Building Lobby Garden

The garden emerges as a minimalist courtyard design in one of New York's densest neighborhoods.

New York, USA



Design / 设计:	Name of Project / 项目名称:	Area / 占地面积:	Completion Date / 竣工时间:	Photography / 摄影:	Client / 客户:
HM White Site Architects	The New York Times Building Lobby Garden	455 m <sup>2</sup>	2011	Aaron Booher, Huel Ming Juang	The New York Times Company, Forest City Ratner Companies



The New York Times Building Lobby Garden led by HM White Site Architects in coordination with Cornelia Oberlander Architects, is considered the heart and soul of the headquarters building. Resting on Manhattan Schist bedrock as the building's only unexcavated area, the courtyard is experienced by 360-degrees of uninterrupted views from a variety of surrounding public spaces and office spaces above. As a counterpoint to its dense, bustling Times Square neighborhood, the open-air garden's central building location celebrates a serene fragment of the Hudson River Valley woodland landscape at the heart of this man-made construct.

Transected by a singular path highlighting the sculpted topography, an emerald evergreen carpet of sedges and ferns stages the golden autumn display of Birch trees and a constellation of glowing bulbs in early spring. A layered web of infrastructure knits the garden with the building and the ground while also supporting the development of healthy endemic soil biology to ensure long term sustainability in this manufactured site.

Wrapped in a transparent glass veil, the 15m tall Birch trees and the undulating carpet of sedges and ferns register a contrasting sculptural relief to the level plane of the floating garden path and the lobby's White Oak floor. No matter where one turns, the garden's woodland sensibilities possess an omni present, drawing attention and sensual connection to changing light and seasonal qualitative.



NATURE+SCAPE1 • Office Zone





**Walking Path:** Wooden Footbridge

**Plants:** Paper Birch Trees (*Betula Papyrifera*), Berkeley Sedge (*Carex Divulsa*), Autumn Ferns, (*Dryopteris Erythrosora*), Snowdrops (*Galanthus Nivalis*), Grass



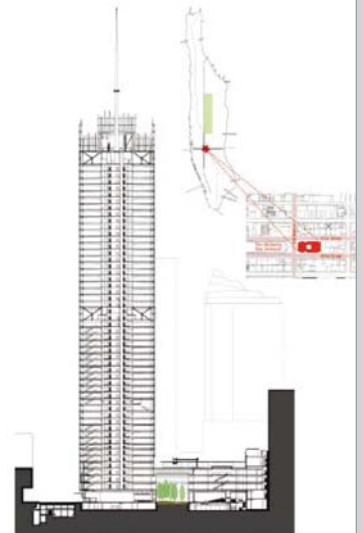
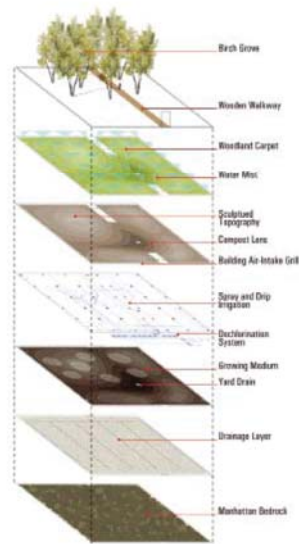
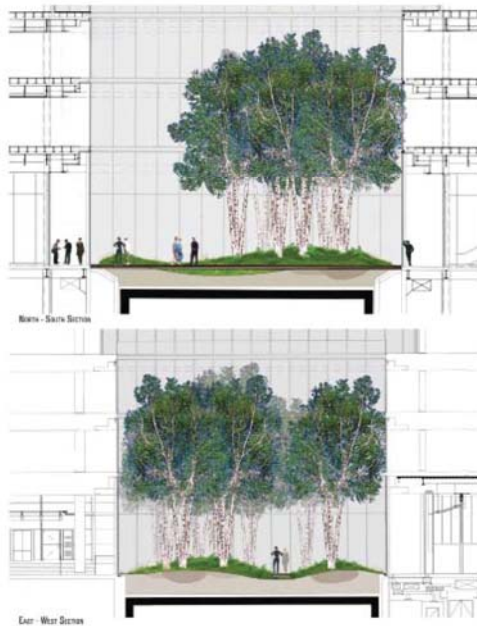
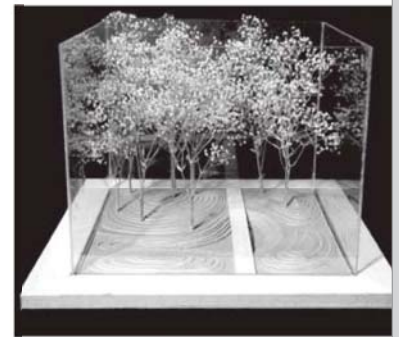
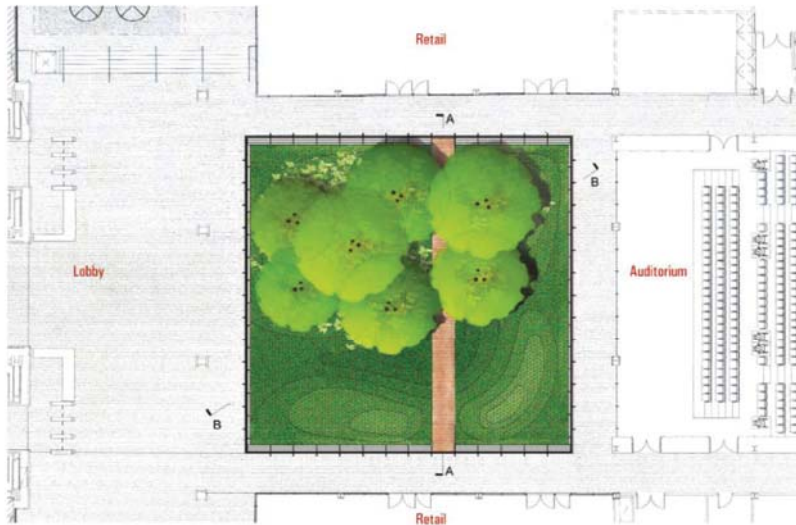
纽约时报办公大厦的门厅花园由HM White Site Architects团队和Cornelia Oberlander Architects团队联手打造而成，它被认为是大厦的中心和灵魂。门厅花园坐落于曼哈顿岩床上，是整座建筑中唯一一处未被挖掘的地方，从大楼的所有角落包括各个公共空间和上面的办公空间，都可以欣赏花园的景致。在时代广场人群熙攘、热闹非凡的背景下，门厅花园为人们带来一片静谧之感，向人们展示了哈德逊河迷人的景观。

将花园一分为二的小路突出了这里的地形地貌，地面上的莎草科和蕨类植物汇成一张翠绿色的长青地毯，衬托着金秋时节发黄的白桦树和初春时节含苞待放的花朵。一系列基础设施将花园和大厦交织在一起，促进了地面土壤和生物的健康成长，从而确保了整个花园的长期可持续发展。

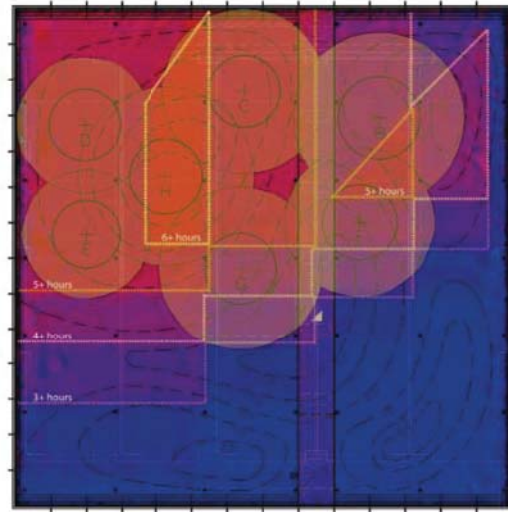
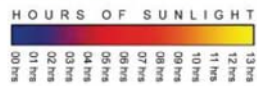
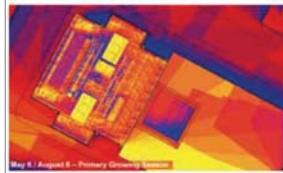
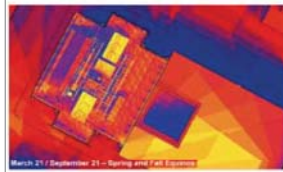
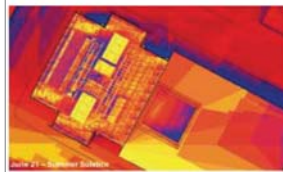


花园被透明的玻璃墙包围，15米高的白桦树和起伏的莎草及蕨类植被与平坦的花园小径以及白橡木地板形成鲜明的对比，雕塑感十足。无论身在何处，这里迷人的绿色丛林都会全方位地吸引人们在此驻足，感受这里光线的变化和季节的变迁。

NATURE+SCAPE! • Office Zone







#### SOLAR ANALYSIS

Microclimatic conditions were measured through ground-breaking 3-D modeling simulations of seasonal solar radiation levels, wind velocity and temperature variations to identify human comfort influences, horticultural limitations and inform a carefully calibrated design.

